



ANNUAL REPORT OCTOBER 2010 – SEPTEMBER 2011



Williamson County Regional Animal Shelter
1855 SE Inner Loop Georgetown, TX 78626
512-943-3322 www.wilcopets.org

A Word from the Director



Another challenging year has passed. Our save rate continues to improve for which I am extremely proud and thankful for. Our intakes increased and yet with the help of the community (adoptions) and our rescue partners, we managed to save even more lives.

Notable issues during this year were the number of injured animals that came into the shelter and the increase in owner surrenders. Injured animals are treated with funds generated by donations to “Jane’s Fund.” This is a medical fund that allows us to have animals seen by outside Veterinarians and procedures such as amputations done. We saw over a dozen cats and dogs with badly broken legs that had to be repaired or amputated. Happily all were placed in homes. The shelter has also seen a significant increase in owner surrenders, 32% in cats and 27% in dogs. The leading reasons given were moving, behavior issues, and can’t afford.

Adoptions have been a life-saver this year as well. Without the community supporting the shelter by adopting shelter animals, there would be an increase in euthanasia for space.

The number one question we get from the community is, “Are you no-kill?”

This is such a misunderstood term. No-Kill means that we don’t euthanize for space (adoptable animals) however, the Regional Shelter is an open admission shelter therefore we take everything that is relinquished to us within our jurisdiction. Technically, we have achieved a “no-kill” status but that status hangs in the balance as more animals come in.

There are many aspects of sheltering that help us reach our goals. Fostering is a program that plays a huge role in our life-saving mission. As noted within the report (page 8), we have a number of foster families. In fact, the picture on the front cover is two older dogs, Faith and Charlie that were surrendered to the shelter and now are enjoying their new big comfy beds in their foster home. The shelter environment is particularly stressful on the older animals and getting them into foster is so important. Personally, older animals that are turned into the shelter is one of the hardest issues for me to deal with emotionally.

Over the year, we transferred 1,523 animals to other organizations (rescue groups). The top four groups that pull dogs and cats from us were the Humane Society of Williamson County, Austin Pets Alive!, Austin Humane Society, and Honorina’s Cat Rescue. Once these animals are pulled by these groups, they are guaranteed to be adopted. This also frees kennel space for us to house the continuous flow of dogs and cats incoming into the shelter.

We continue to work on raising funds to build two play yards/exercise pens for the dogs in back of the shelter. The area would also include a memorial path and garden as well as a walking trail. Our dogs are housed inside so getting them out of the kennel to run and play each day is very important for their mental well being.

Sheltering animals is an extremely rewarding job and I am extremely proud of our accomplishments at the Williamson County Regional Animal Shelter.



Cheryl Schneider
Shelter Director

Staff



The shelter staff are the backbone of the shelter operations. They must be compassionate and caring, understand infection control procedures and recognize illness, be able to deal with customers and tolerant of noises, smells, and bad behavior; basically they must be flexible, organized and a jack of all trades! Staffing at the shelter is minimal and



each staff member is integral to maintaining the shelter and caring for the animals. There are about 300 cats, kittens, dogs and puppies housed daily. The shelter is staffed from 7 a.m. to 6 p.m. daily to accomplish the many tasks that are necessary for the shelter to function.

The Animal Care Specialists (ACS) clean the kennels as well as feed and monitor the animals. When we are at full staff, there are three ACS in dogs and three in cats. They also assist customers in the kennels who wish to adopt an animal or who may be looking for their lost animal.

The Administrative Specialists are the front staff and take care of



the customers as they come in. They perform all transactions of adoptions, owner surrenders, stray intake, and transfers just to name a few as well as answer the phones.

The Veterinary Technicians medicate the sick animals and intake all the incoming animals. Each animal that enters the shelter is vaccinated, weighed, and have their picture taken. They check for microchips and do quick health assessments and then find a place for the animals. The Vet Techs also assist in surgery 2-3 times a week.



Goals

- ❁ Reduce euthanasia to only behaviorally aggressive animals or sick/injured animals with a poor prognosis for recovery by increasing adoptions, transferring more animals to rescue groups and humane organizations, and utilizing foster homes.
- ❁ Offer free spay/neuter clinics once a month for feral cats or animals of low income families.
- ❁ Continue to increase volunteer participation in shelter and off-site activities.
- ❁ Increase the hours open to the public to facilitate adoptions and customer service.
- ❁ Partner with obedience trainers and animal behaviorlists to sponsor classes at the shelter.

- ❖ Offer assistance by phone to families with animal issues to decrease the number of pet surrenders to the shelter.
- ❖ Develop a disaster response team that is highly trained and response ready.
- ❖ Recruit a volunteer to coordinate the volunteers, marketing efforts and community outreach.
- ❖ Develop a Strategic Plan on lowering euthanasia community-wide.
- ❖ Securing grants for the low cost spay/neuter clinics and adoption trailer.

Accomplishments/Activities

The Williamson County Regional Animal Shelter continues to be involved in numerous events and activities to promote the shelter.

Ongoing

- ❖ A Volunteer Orientation class is held the 1st Thursday and 3rd Tuesday of each month followed by a Dog and Cat Handling Class for the new volunteers.
- ❖ WCRAS supports the Trap-Neuter-Return programs in the community and utilizes every opportunity to educate the public about feral cats and the benefits of TNR. A 2 year targeted spay/neuter grant for \$24,000 was secured through PetSmart Charities for the regions of Cedar Park, Leander and Liberty Hill. So far this year, 408 cats and kittens were surgically sterilized through the grant.
- ❖ Hosts a low cost vaccination and microchipping clinic the 1st and 3rd Saturday of each month from 11-2. .
- ❖ A shelter animal that is available for adoption is featured on Fox 7 News as “Pet of the Week” the 4th Friday of every month.
- ❖ Monthly promotions with decreased adoption fees are held to increase the number of adoptions and attract visitors to the shelter.
- ❖ Dogs and puppies that are available for adoption are taken to the PetSmart in Wolf Ranch and University PetSmart Thursdays-Saturdays and to the Round Rock PetSmart on weekends which increases our adoption rates.
- ❖ Our cats and kittens fill the adoption center at the Petsmart on University Blvd behind the IKEA and Georgetown Animal Outreach regularly pulls cats and kittens from the shelter for adoption at the Wolf Ranch PetSmart.
- ❖ Hosts an 8 week behavior class taught by “The Family Dog,” with special rates for adopted shelter animals.
- ❖ Continue the Kids-N-K9 program in cooperation with the Juvenile Center.
- ❖ Offer classes for volunteers that want to assist in the Red Cross shelters in disasters.
- ❖ Started a Facebook page and provides updates daily.



Special Events and Fundraisers

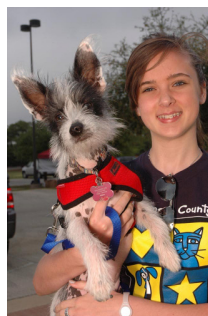
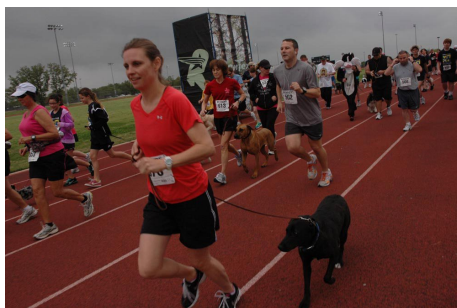
- Annual Denim and Diamonds Fur Ball



- Numerous Girl and Boy Scout projects
- Bark and Purr Fest



- Pet Blessing at the Grace Episcopal Church in Georgetown
- Santa Claws and Paws at the Shelter
- Pet Photo's at PetSmart
- Annual Woof, Walk, and Wrun

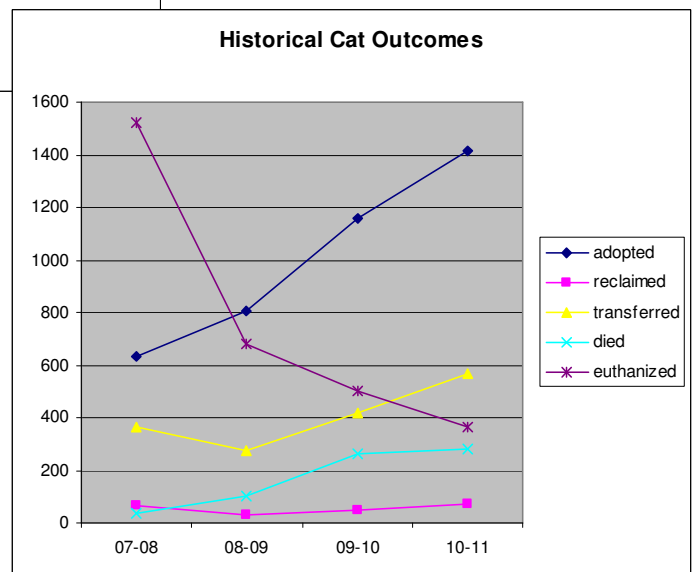
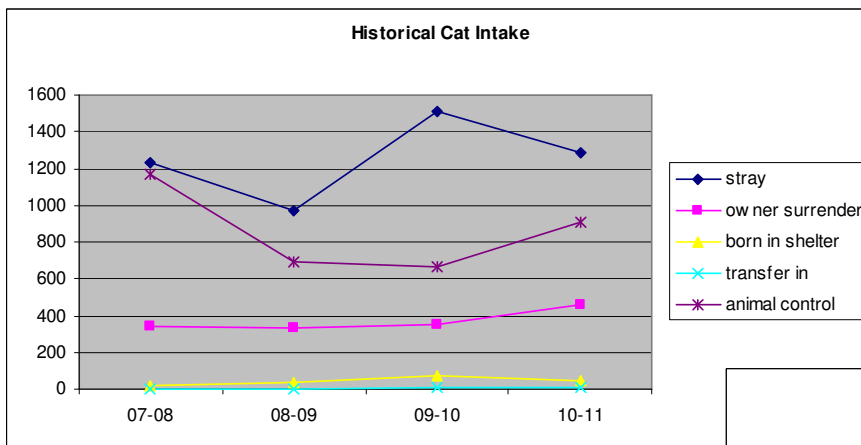


- Christmas Stroll
- Market Days in Georgetown
- Holiday Parties at the Shelter
- National Pit Bull Appreciation Day

Annual Comparison - Dog and Cat Statistics

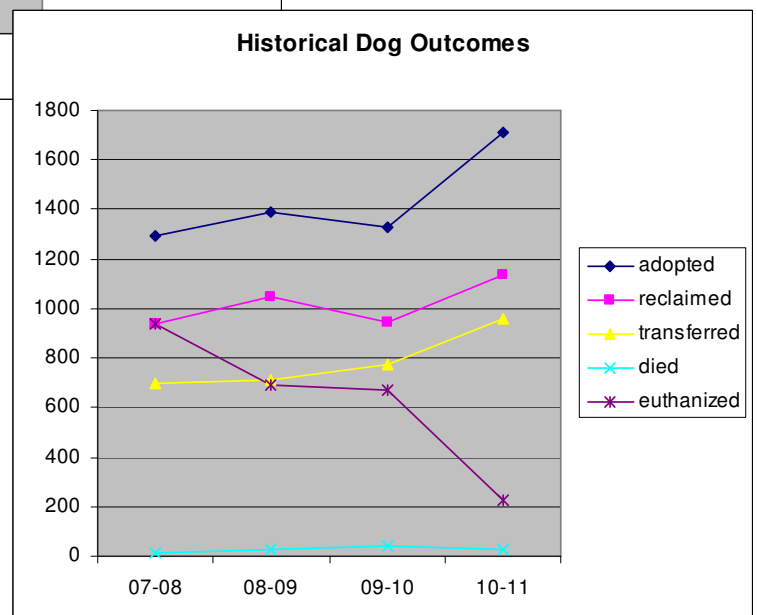
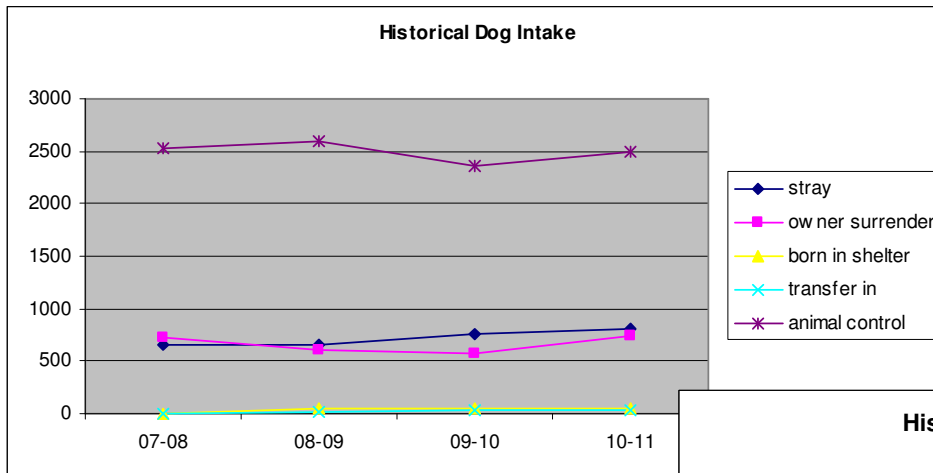
Cats

| | 07-08 | 08-09 | 09-10 | 10-11 |
|-----------------------|-------------|-------------|-------------|-------------|
| Stray | 1229 | 973 | 1514 | 1291 |
| Owner Surrender | 340 | 331 | 350 | 461 |
| Transfer In | 0 | 2 | 7 | 10 |
| Born in Shelter | 19 | 34 | 73 | 43 |
| ACO Agency | 1171 | 696 | 663 | 912 |
| Total Incoming | 2759 | 2036 | 2607 | 2707 |
| Adopted | 633 | 803 | 1159 | 1417 |
| Reclaimed | 65 | 32 | 45 | 71 |
| Transferred | 364 | 274 | 420 | 568 |
| Other | 53 | 126 | 282 | 278 |
| Admin Missing | 124 | 47 | 41 | 77 |
| Euthanized | 1523 | 681 | 504 | 363 |
| Total Outgoing | 2762 | 1963 | 2431 | 2774 |



Dogs

| | 07-08 | 08-09 | 09-10 | 10-11 |
|-----------------------|-------------|-------------|-------------|-------------|
| Stray | 662 | 649 | 755 | 811 |
| Owner Surrender | 717 | 599 | 579 | 734 |
| Transfer In | 0 | 21 | 30 | 36 |
| Born in Shelter | 2 | 45 | 43 | 49 |
| ACO Agency | 2523 | 2591 | 2355 | 2497 |
| Total Incoming | 3904 | 3905 | 3762 | 4127 |
| Adopted | 1294 | 1391 | 1329 | 1710 |
| Reclaimed | 937 | 1047 | 943 | 1138 |
| Transferred | 696 | 710 | 774 | 955 |
| Other | 21 | 33 | 44 | 25 |
| Admin Missing | 71 | 3 | 6 | 7 |
| Euthanized | 969 | 690 | 672 | 227 |
| Total Outgoing | 3917 | 3874 | 3768 | 3835 |



Total Intake of all Animals

| Intake | 2007-2008 | 2008-2009 | 2009-2010 | 2010-2011 |
|---|------------------|------------------|------------------|------------------|
| Cats and Kittens | 2759 | 2036 | 2607 | 2707 |
| Dogs and Puppies | 3904 | 3907 | 3762 | 4127 |
| Domestic Rabbits | 8 | 0 | 8 | 18 |
| Wildlife (Raccoons, Skunks, Opossums, Squirrels, Rabbits, Rat, Fox, Deer) | 53 | 36 | 25 | 106 |
| Bats | 57 | 16 | 55 | 133 |
| Exotic Animals (Lizard, Slider, Turtles, etc) | 2 | 0 | 5 | 2 |
| Livestock (sheep and goats, chickens) | 4 | 1 | 9 | 9 |
| Wild Birds (buzzard, hawk, owlet, other) | 9 | 0 | 9 | 10 |
| Domestic Birds (parakeets, parrots) | 2 | 0 | 2 | 11 |
| Other Domestic Pets (guinea pigs, degus, hedgehog, hamsters, ferret, pot belly pig) | 19 | 7 | 10 | 7 |
| Total | 6817 | 6003 | 6493 | 7130 |

Other Interesting Numbers/Facts

- 🐾 1603 animals went into a foster home, 277 animals more than once. We had 493 foster homes. This is double the foster homes we had in 2009-2010.
- 🐾 Returned adoptions also doubled from the previous year. 180 dogs and/or puppies and 72 cats and/or kittens were returned.
- 🐾 645 cats/kittens were sterilized through our free-roaming spay/neuter clinic. This is also doubles the surgeries from the previous year.
- 🐾 Disease outbreak of panleukopenia in the cat and kitten population affecting about 200 cats and kittens resulting in their death again plagued the shelter in June and July.
- 🐾 1173 dogs and 173 cats were licensed in Williamson County this year.
- 🐾 Average length of stay in dogs was 10.8 days and in cats, 17.4 days.

Animal Intake Fiscal Year Totals

Cat and Dog Intake by Jurisdiction

| | 2007 2008 | 2008 2009 | 2009 2010 | 2010 2011 |
|---------------|--------------|--------------|--------------|--------------|
| Cedar Park | 688 | 613 | 742 | 679 |
| Leander | 680 | 624 | 643 | 647 |
| Round Rock | 1401 | 1280 | 1423 | 1873 |
| Hutto | 310 | 343 | 312 | 398 |
| Williamson Co | 3464 | 2940 | 3095 | 3095 |
| Other | 131 | 141 | 154 | 142 |

Animal Outgoing Percentages

Cats

| | 2007 2008 | 2008 2009 | 2009 2010 | 2010 2011 |
|------------|--------------|--------------|--------------|--------------|
| Adopted | 23% | 43% | 50% | 58% |
| Reclaim | 3% | 2% | 2% | 3% |
| Transfer | 18% | 14% | 20% | 22% |
| Other | 2% | 6% | 8% | 10% |
| Euthanasia | 53.95% | 34.12% | 18.86% | 12.68% |

Dogs

| | 2007 2008 | 2008 2009 | 2009 2010 | 2010 2011 |
|------------|--------------|--------------|--------------|--------------|
| Adopted | 33% | 36% | 35% | 41% |
| Reclaim | 24% | 27% | 25% | 28% |
| Transfer | 18% | 18% | 20% | 22% |
| Other | 0% | 1% | 1% | 1% |
| Euthanasia | 24.97% | 17.66% | 17.85% | 5.53% |

BUDGET EXPENDITURES FY 2010-2011

| | | |
|------------------------|--------------|--|
| Personnel | \$752,302.48 | Salaries and Benefits |
| Shelter Improvement | \$4,236.04 | Small Equip and Tools, Facility Maint and Repair |
| Direct Animal Care | \$192,884.54 | Janitorial Supplies, Professional Services, Animal Care, Medical Care, Disposal |
| Utilities | \$66,207.78 | Telephone, Electric and Water |
| Office, bldg, and yard | \$27,879.36 | Office Equip and Furniture, Computer, Office and Paper supplies, Extermination, Janitorial Contract, Lawn Service, Bond, Property Ins., Courier, etc |
| Vehicle | \$1,117.09 | Gasoline, Repairs and Maintenance, Insurance |
| Personnel Costs | \$4,236.70 | Uniforms, Membership Dues, Publications, Travel and Training |
| Donations | \$50,548.50 | HW and Medical Treatment, other misc. |
| Purchases for Resale | \$140.96 | Retail items for sale in Lobby |

Annual Budget Comparisons

| | Budgeted Amount | Revenue | Expenditures | Donations | Donation Expended |
|------------------|-----------------------|---------------------|-----------------------|--------------------|--------------------|
| 2007-2008 | \$1,001,845.00 | \$187,350.77 | \$974,865.66 | \$17,980.67 | \$578.00 |
| 2008-2009 | \$1,007,859.32 | \$178,714.58 | \$977,718.41 | \$27,673.96 | \$10,655.31 |
| 2009-2010 | \$1,035,782.00 | \$173,877.64 | \$1,010,835.19 | \$51,037.72 | \$24,542.31 |
| 2010-2011 | \$1,042,808.61 | \$188,153.42 | \$1,049,004.95 | \$92,801.25 | \$50,548.50 |

Jurisdiction Budget Percentage

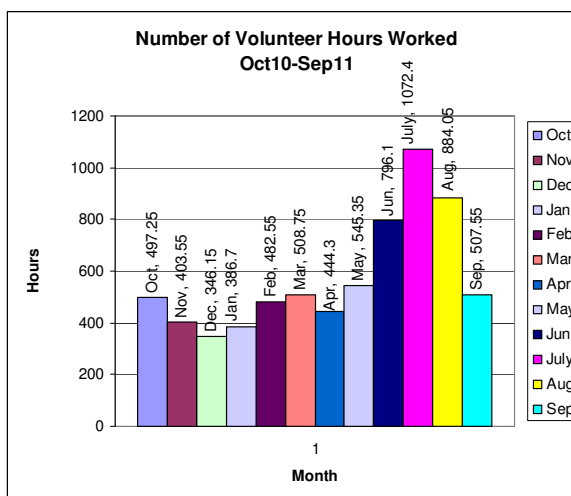
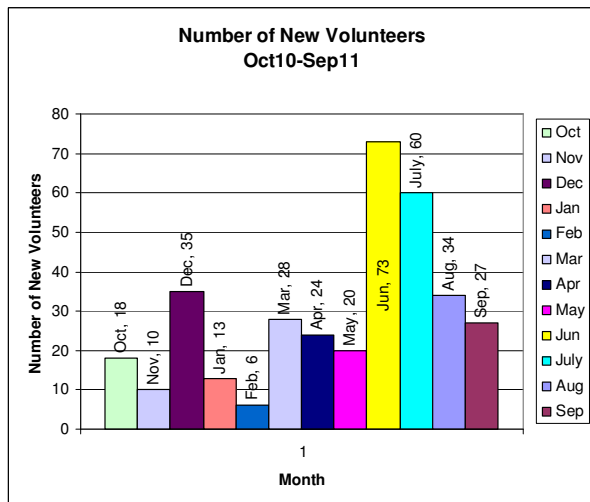
| | 2007-2008 | 2008-2009 | 2009-2010 | 2010-2011 | 2011-2012 |
|--------------------------|-------------|--------------|--------------|--------------|--------------|
| Cedar Park | 9.5% | 9.8% | 10.3% | 11.9% | 10.4% |
| Leander | 9.5% | 10.2% | 11% | 10.5% | 9.1% |
| Round Rock | 30% | 21.9% | 21.3% | 21.2% | 26.3% |
| Hutto | 1% | 4.7% | 5.5% | 5.1% | 5.4% |
| Williamson County | 50% | 53.4% | 51.9% | 51.3% | 48.8% |

VOLUNTEERS

During the past fiscal year, 348 new volunteers have attended the orientation meeting and subsequent cat and dog handling classes. Volunteers have donated 6,874.7 hours to the shelter during the year. Volunteers fulfill many needs of the shelter. They come in and assist in cleaning, especially when we are short staffed. They also are instrumental in maintaining the mental health of our animals by walking the dogs and playing with the cats and kittens. The volunteers organize off sites events and adoptions as well as fundraisers. We continue to have great success in cat adoptions because of our partnership with PetSmart. There is a dedicated team of volunteers lead by Sally Martin that manages the program. In the 2010-2011 fiscal year, 295 cats and kittens were adopted because of this team.



You can't mention volunteers without specifically thinking about Sheryl Hays who spends countless hours and dollars on sick and injured animals. She also serves as our Event Coordinator and is responsible for most of the fundraising activities. If you have ever looked at our adoptable dogs on our website, you will notice the professional grade photographs thanks to Harvey Ayers. He is here every day taking out the new arrivals and getting these great shots.





1855 SE Inner Loop
Georgetown, Texas 78626
(512) 943-3322
www.wilcopets.org

Mission:

The Williamson County Regional Animal Shelter is a collaborative effort between Williamson County and the cities of Round Rock, Cedar Park, Leander, and Hutto. It provides a safe environment for the lost, abandoned, and homeless animals of these jurisdictions and places them in a good home whenever possible.

Vision:

- To save every healthy and behaviorally sound companion animal
- To save all dogs and cats that can be medically treated and behaviorally rehabilitated and do not pose a public health and safety risk

Governing Board

Laurie Hadley, Round Rock Assistant City Manager
Josh Selleck, Cedar Park Finance Director
Jim Bechtol, Leander Development Services Director
David Mitchell, Hutto Assistant City Manager
Valerie Covey, Williamson County Commissioner

Advisory Board

| | |
|-----------------------------|---|
| Holly Putman, DVM | Veterinarian |
| Rebekah Montie, ACO | County/Municipal Official |
| Madelen Powell, Chairperson | Person Involved in Operation of Shelter |
| Mary Erlandson | Member of a Welfare Organization |
| Georganne Duron, Secretary | Resident of Participation Jurisdiction |

Management Staff

| | |
|------------------|-----------------------------|
| Cheryl Schneider | Director of Animal Services |
| Linda Gunter | Administrative Supervisor |
| Madelen Powell | Kennel Manager |